

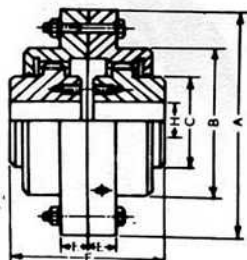
## FLEXIBLE GEARED COUPLINGS

**Universal** Flexible Geared Couplings ensures trouble-free service for coupling needs, in a way, the **bush** is having spherical shaped teeth and are precision machined to last for years and thus size of coupling must please be carefully done.

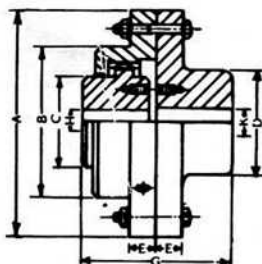
### RANGE

- Full Geared Type
- Half-geared Half-rigid Type

Minimum Information Required While Sending Enquiry/Order	
1.	Motor H.P. rating i.e. 40 or 100 H.P. & so on.
2.	R.P.M. at which coupling is to run i.e. 1100 or 5000 & so on.
3.	Bore size in mm i.e. 40 or 270mm & so on.
4.	Coupling Type i.e. Full geared or Half geared Half rigid type.
5.	O.D. in mm.
6.	Machine type.
7.	Quantity in nos.



Full Geared Coupling



Half Geared - Half Rigid Coupling



### Dimension Details

Size	BOTH COUPLINGS						FULL GEARED					HALF GEARED-HALF RIGID TYPE		
	Torque Kg. M.	Power per 100 REV/MIN. KW	Power per 100 REV/MIN. H.P.	Max. Speed REV/MIN.	O.D.		B	C	F	Max. Bore H	D.	G	Max. Bore K	
S0	50	5.22	7	7000	150	16	90	50	105	30	60	107.5	40	
S1	100	10.44	14	6300	170	18	110	65	115	40	85	117.5	55	
S2	200	20.88	28	5000	185	18	125	90	145	55	110	147.5	70	
S3	430	44.76	60	4000	220	22	150	105	177	70	130	178.5	85	
S4	780	81.31	109	3300	250	22	180	125	219	85	160	219.5	100	
S5	1060	110.40	148	2800	290	25	205	150	245	105	190	242.5	120	
S6	1660	173.07	232	2500	320	25	235	170	265	120	215	262.5	140	
S7	2640	274.52	368	2130	350	25	265	200	315	140	245	312.5	160	
S8	3210	334.20	448	1900	380	25	295	230	365	160	280	367.5	180	
S9	4000	416.26	558	1700	430	28	330	250	415	180	310	412.5	200	
S10	6780	706.46	947	1420	490	28	390	310	495	220	360	492.5	225	
S11	10000	1041.41	1396	1250	545	30	445	350	555	260	415	557.5	270	
S12	13930	1450.97	1945	1100	590	30	490	400	620	290	460	620.5	310	

\* Also manufactured with quick-fit taper lock bush system.

