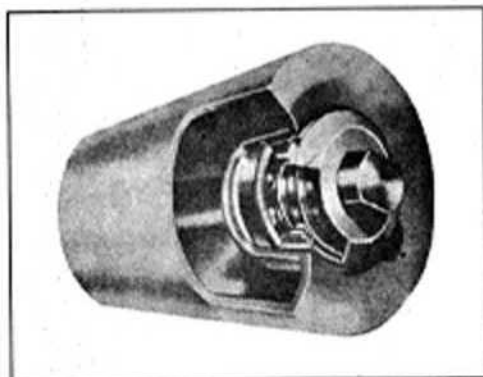
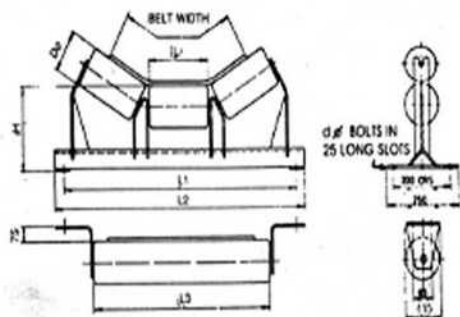


## IDLERS

**Universal** Idlers ensures achievement of operational success of belt conveyor(s), in a way, the shell is made from M.S. ERW black steel tube as per IS:9295 & IS:1239, pressed steel housing from CRCA sheet, shaft of bright steel bar, sealing system consisting of (backseal, double labyrinth, moulded dust cover, a rain cap), single piece fabricated steel idler frame and rollers fitted with sieze resistant ball bearings and conforms to IS:8598.

### RANGE

- Troughing (3/5 rolls) for carrying
- Return (1 roll) for return
- Troughing Impact (rubber lined)
- Flat Impact
- Return Self-Aligning
- Others, as per specific requirements.

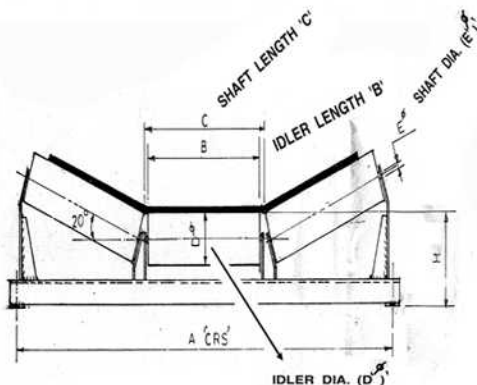


BELT WIDTH	ROLLER LENGTH			MOUNTING DIMENSIONS		M-d	HEIGHT DIMENSION "H"																	
	L	L3	L1	L2	ROLLER DIA "D"																			
W	L	L3	L1	L2	M-d	76.1	88.98	101.6	114.3	127	139.7	152.4	159	165										
400	160	500	690	755	M12	200	200	200	225	225	-	-	-	-										
450	190	550	740	805	M12	200	200	200	225	225	-	-	-	-										
500	200	600	790	855	M12	200	200	200	225	225	-	-	-	-										
600	235	700	890	950	M12	-	-	-	225	225	-	-	-	-										
650	250	750	940	1000	M12	-	-	-	225	225	275	-	-	-										
750	290	850	1040	1100	M12	-	-	-	225	225	275	-	-	-										
800	315	950	1090	1150	M12	-	-	-	225	225	275	275	275	-										
900	350	1050	1190	1250	M12	-	-	-	225	225	275	275	275	-										
1000	380	1150	1290	1350	M12	-	-	-	225	225	275	275	275	-										
1200	465	1400	1490	1560	M16	-	-	-	240	240	275	275	275	290										
1400	530	1600	1690	1750	M16	-	-	-	240	240	275	275	275	290										
1600	600	1800	1900	1950	M16	-	-	-	240	240	275	275	275	290										
1800	670	2000	2100	2150	M20	-	-	-	240	240	275	275	275	290										
2000	750	2200	2300	2350	M20	-	-	-	240	240	275	275	275	290										

All dimensions in mm.

### Minimum Information Required While Sending Enquiry/Order

- For belt width, say 800mm or 1000mm & so on
- Degree of picking idlers i.e. 20° or 35° & so on
- Angle size to be used i.e. 50 x 50 x 6 or 65 x 65 x 6 & so on if at all specifically to be stated.
- Idler pipe size (OD) in mm.
- Overall O.D. in case rubber lined idlers are reqd. for impact idlers.
- Housing material i.e. CRCA steel or C.I. & so on.
- Bearing size, type & make i.e. 6205 or 420205 & so on.
- Qty in Nos.
- Your detailed drawing, if possible.



Carrying Troughing