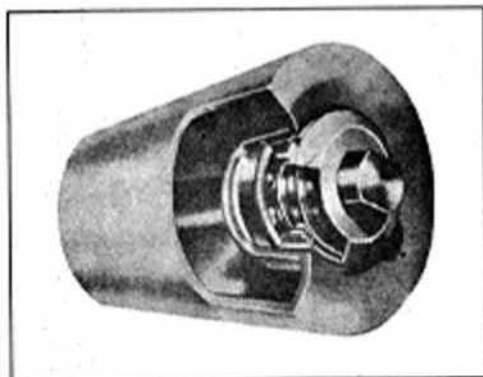
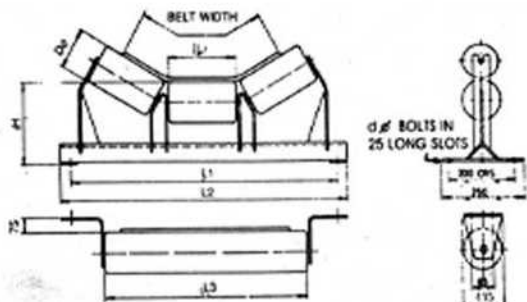


IDLERS

Universal Idlers ensures achievement of operational success of belt conveyor(s), in a way, the shell is made from M.S. ERW black steel tube as per IS:9295 & IS:1239, pressed steel housing from CRCA sheet, shaft of bright steel bar, sealing system consisting of (backseal, double labrynth, moulded dust cover, a rain cap), single piece fabricated steel idler frame and rollers fitted with sieze resistant ball bearings and conforms to IS:8598.

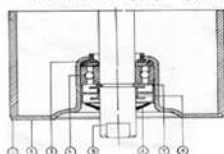
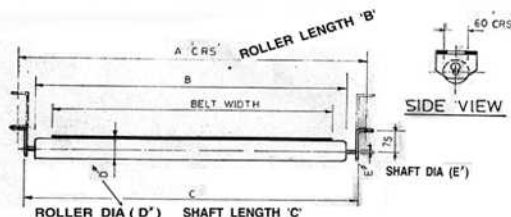
RANGE

- Troughing (3/5 rolls) for carrying
- Return (1 roll) for return
- Troughing Impact (rubber lined)
- Flat Impact
- Return Self-Aligning
- Others, as per specific requirements.



BELT WIDTH	ROLLER LENGTH	MOUNTING DIMENSIONS			M-d	HEIGHT DIMENSION "H"									
		L1	L2	L3		ROLLER DIA "D"									
W	L	L3	L1	L2		76.1	85.98	101.6	114.3	127	139.7	152.4	159	165	
400	160	500	690	755	M12	200	200	200	225	225	-	-	-	-	-
450	190	550	740	805	M12	200	200	200	225	225	-	-	-	-	-
500	200	600	790	855	M12	200	200	200	225	225	-	-	-	-	-
600	235	700	890	950	M12	-	-	-	225	225	-	-	-	-	-
650	250	750	940	1000	M12	-	-	-	225	225	275	-	-	-	-
750	290	850	1040	1100	M12	-	-	-	225	225	275	-	-	-	-
800	315	950	1090	1150	M12	-	-	-	225	225	275	275	275	-	-
900	350	1050	1190	1250	M12	-	-	-	225	225	275	275	275	-	-
1000	380	1150	1290	1350	M12	-	-	-	225	225	275	275	275	-	-
1200	465	1400	1490	1560	M16	-	-	-	240	240	275	275	275	290	-
1400	530	1600	1690	1750	M16	-	-	-	240	240	275	275	275	290	-
1600	600	1800	1900	1950	M16	-	-	-	240	240	275	275	275	290	-
1800	670	2000	2100	2150	M20	-	-	-	240	240	275	275	275	290	-
2000	750	2200	2300	2350	M20	-	-	-	240	240	275	275	275	290	-

All dimensions in mm.



P. NO.	DESCRIPTION	QTY.	MATERIAL.
1	ROLLER PIPE	1	MS-ERW
2	BEARING HOUSING	2	CRCA-EDD
3	REAR SEAL	2	NYLON-5
4	BEARING	2	STANDARD
5	SHAFT	1	BRIGHT BAR
6	RUBBER SEAL	2	NEOPRENE
7	CIRCLIP	2	IS-3075HEAVY DUTY
8	SEALS	2	NYLON-5

Minimum Information Required While Sending Enquiry/Order

1. For belt width, say 800mm or 1000mm & so on
2. Degree of picking idlers i.e. 20° or 35° & so on
3. Angle size to be used i.e. 50 x 50 x 6 or 65 x 65 x 6 & so on if at all specifically to be stated.
4. Idler pipe size (OD) in mm.
5. Overall O.D. in case rubber lined idlers are reqd. for impact idlers.
6. Housing material i.e. CRCA steel or C.I. & so on.
7. Bearing size, type & make i.e. 6205 or 420205 & so on.
8. Crty in Nos.
9. Your detailed drawing, if possible.

Return Self Align