



Conveyors Troughing Idlers Rollers Technical Specifications



Conveyor Idler Product Specification HIC Manufactured UNIVERSAL Brand

Universal Idlers ensures **achievement of operational success of belt conveyors**, in a way, the shell is made form Mild Steel ERW black steel tube superseding IS: 9295 & IS: 1239, pressed steel **housing** from CRCA sheet, **shaft** of bright steel bar, **sealing system** consisting of (back-seal, double labryinth, moulded dust cover, a rain cap), single piece fabricated steel idler **frame** and rollers fitted with seize resistant **ball bearings** and supersedes IS: 8598.



Conveyors Troughing Idlers

Material Handling Conveyor Idler Rollers

- Troughing Idler (3/5 rolls) for carrying
- Flat Impact Belt Conveyor Idler
- Return Idler (1 roll) for return
- Self-Aligning Return Idler
- Troughing Impact Idler (rubber lined)
- Idler Roller Others, as per specific requirements

Material Handling Equipment Conveyor Belt Roller Technical Specification

BELT WIDTH	ROLLER LENGTH		MOUNTING DIMENSIONS		HEIGHTDIMENSION"H" ROLLERDIA "D"									
	L	L3	L1	L2	M-d	76.1	88.98	101.6	114.3	127	139.7	152.4	159	165
400	160	500	690	755	M12	200	200	200	225	225	-	-	-	-
450	190	550	740	805	M12	200	200	200	225	225	-	-	-	-
500	200	600	790	855	M12	200	200	200	225	225	-	-	-	-
600	235	700	890	950	M12	-	-	-	225	225	-	-	-	-
650	250	750	940	1000	M12	-	-	-	225	225	275	-	-	-
750	290	850	1040	1100	M12	-	-	-	225	225	275	-	-	-
800	315	950	1090	1150	M12	-	-	-	225	225	275	275	275	-
900	350	1050	1190	1250	M12	-	-	-	225	225	275	275	275	-
1000	380	1150	1290	1350	M12	-	-	-	225	225	275	275	275	-
1200	465	1400	1490	1560	M16	-	-	-	240	240	275	275	275	290
1400	530	1600	1690	1750	M16	-	-	-	240	240	275	275	275	290
1600	600	1800	1900	1950	M16	-	-	-	240	240	275	275	275	290
1800	670	2000	2100	2150	M20	-	-	-	240	240	275	275	275	290
2000	750	2200	2300	2350	M20	-	-	-	240	240	275	275	275	290



Contact For Quote:

HIC INTERNATIONAL CO -Cast Iron Products Idlers Roller Div.

D-136, Shankar Road, New Delhi - 110060, India

Phone: 91-11-6547 2400, 2874 5120

Fax: 91-11-2874 2791

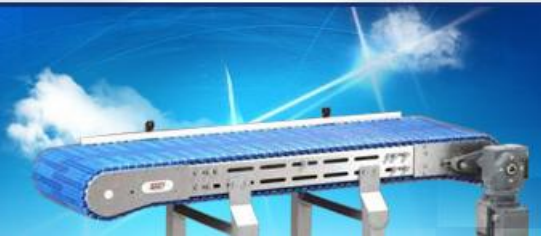
E-mail : universal@hic-india.com; belts@universaldelhi.org

Website : <http://www.rubber-steel-industrial-products.com>

Key personnel : Mr. Anil Gupta, President



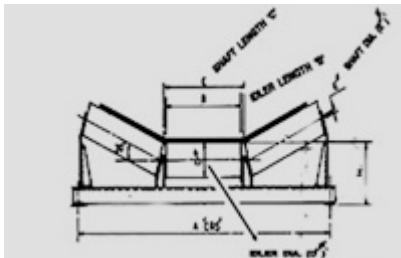
Conveyors Troughing Idlers Rollers Technical Specifications



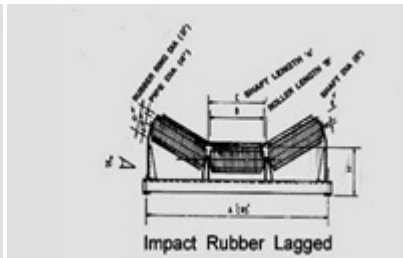
Conveyor Roller Information To Be Supplied With Enquiry or Order

1. For belt width, say 800mm or 1000mm & so on.
2. Degree of picking idlers i.e. 200 or 350 & so on.
3. Angle size to be used i.e. 50x50x6 or 65x65x6 & so on if at all specifically to be stated.
4. Idler pipe size (OD) in mm.
5. Overall O.D. in case rubber lined idlers are reqd. for Impact Idlers.
6. Housing material i.e. CRCA steel or C.I. & so on.
7. Bearing size, type & make i.e. 6205 or 420205 & so on.
8. Idler Roller Quantity in Nos.
9. Your detailed drawing. If possible.

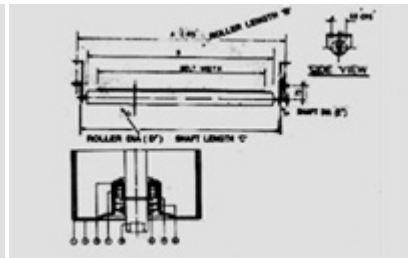
P.no.	DESCRIPTION	QTN	MATERIAL
1	ROLLER PIPE	1	MS-erw
2	BEARING HOUSING	2	CRCA
3	REAR SEAL	1	NYLON-6
4	BEARING	1	STANDARD
5	SHAFT	1	BRIGHT BAR
6	RUBBER SEAL	2	NEOPRENE
7	CIRCLIP	1	HEAVY DUTY
8	SEALS	1	NYLON-6



Carrying Troughing Idlers



Impact Rubber Lagged Rollers



Return Self Align Idlers

Disclaimer: Information's, written and verbal are provided by HIC, relative to its products which it determines to be reliable & no liabilities of whatsoever nature in regards to its uses. The purchaser of UNIVERSAL brand industrial products should determine for itself the suitability of such products.



Contact For Quote:

HIC INTERNATIONAL CO -Cast Iron Products Idlers Roller Div.

D-136, Shankar Road, New Delhi - 110060, India

Phone: 91-11-6547 2400, 2874 5120

Fax: 91-11-2874 2791

E-mail : universal@hic-india.com; belts@universaldelhi.org

Website : <http://www.rubber-steel-industrial-products.com>

Key personnel : Mr. Anil Gupta, President



Belt Conveyor Machinery Pulleys Technical Specifications



Conveyor Pulley Technical Specification INDUSTRIAL MACHINERY HIC Manufactured

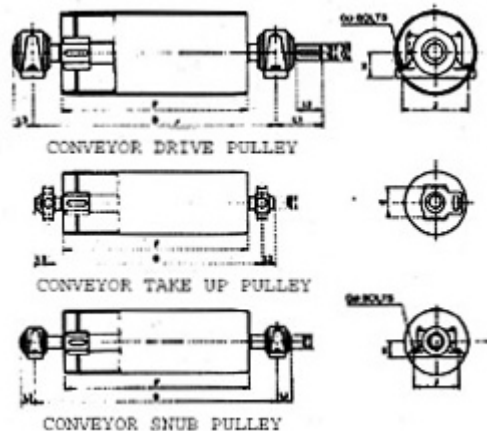
Universal Conveyor Pulleys ensures continuous operation with increased bearing life and reduced power consumption, in a way, the shell is made from heavy tubes or fabricated from steel plates, pulley shafts of carbon steel machined with proper bore and keyway (taper lock bushings are also offered being optional), shafts fitted with anti-friction self-aligning ball bearings, pulley drum furnished with high quality rubber lagging grooved properly to resist slippage and conforms to IS:8531.



Conveyor Pulley

Conveyor Pulley MATERIAL HANDLING EQUIPMENT Product Specification

- Conveyor Belt Drive Pulley upto 2400 mm BW
- Belt Conveyor System Snub Pulleys
- Conveyor Machine Take up Pulley
- Industrial Pulleys, Others, as per specific requirements.



Contact For Quote:

HIC INTERNATIONAL CO -Cast Iron Products Belt Pulley Div.

D-136, Shankar Road, New Delhi - 110060, India

Phone: 91-11-6547 2400, 2874 5120

Fax: 91-11-2874 2791

E-mail : universal@hic-india.com; belts@universaldelhi.org

Website : <http://www.rubber-steel-industrial-products.com>

Key personnel : Mr. Anil Gupta, President



Belt Conveyor Machinery Pulleys Technical Specifications



BELT WIDTH		400	450	500	600	650	750	800	900	1000	1200	1400	1600	1800	2000	
F		500	550	600	700	750	850	950	1050	1150	1400	1600	1800	2000	2200	
B	40 \varnothing	50 \varnothing	700	750	800	900	950	1050	1150	1250	1350	-	-	-	-	
	65 \varnothing		750	800	850	950	1000	1100	1200	1300	1400	1650	1850	-	-	
	80 \varnothing	100 \varnothing	800	850	900	1000	1050	1150	1250	1350	1450	1700	1900	2100	2300	2500
	125 \varnothing	140 \varnothing	850	900	950	1050	1100	1200	1300	1400	1500	1750	1950	2150	2350	2550

d \varnothing	d2 \varnothing	L1	L2	L3	J	H	G	E
40 \varnothing	38 \varnothing	125	58	50	170	60	M12	102
50 \varnothing	48 \varnothing	150	82	55	210	70	M16	102
65 \varnothing	60 \varnothing	175	105	65	230	80	M16	151
80 \varnothing	75 \varnothing	200	105	80	290	100	M20	165
100 \varnothing	95 \varnothing	235	130	95	350	125	M24	260
125 \varnothing	120 \varnothing	275	150	110	420	150	M30	-
140 \varnothing	130 \varnothing	300	175	125	470	170	M30	-

Conveyor Pulleys Information To Be Supplied With Enquiry or Order

1. Pulley Drum Size i.e. 850mm or 1050mm & so on.
2. Drive Shaft or bearing size.
3. Overall shaft length.
4. Plain shaft extension.
5. Face length.
6. Drive shaft extension.
7. Keyway length, depth & width.
8. Finished drum dia.
9. Rubber lagging thickness in mm
10. Finished diameter over rubber lagging.
11. Quantity in Nos.

Disclaimer: Information's, written and verbal are provided by HIC, relative to its products which it determines to be reliable & no liabilities of whatsoever nature in regards to its uses. The purchaser of UNIVERSAL brand industrial products should determine for itself the suitability of such products.



Contact For Quote:

HIC INTERNATIONAL CO -Cast Iron Products Belt Pulley Div.

D-136, Shankar Road, New Delhi - 110060, India

Phone: 91-11-6547 2400, 2874 5120

Fax: 91-11-2874 2791

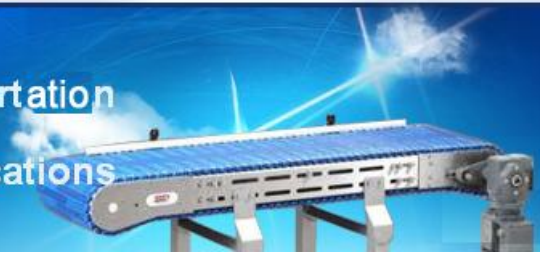
E-mail : universal@hic-india.com; belts@universaldelhi.org

Website : <http://www.rubber-steel-industrial-products.com>

Key personnel : Mr. Anil Gupta, President



Materials Transportation Conveyor Belts Technical Specifications



Conveyor Belts Product Specification HIC Manufactured UNIVERSAL Brand

Universal Conveyor Belts ensures **safe transportation of lifting & unloading of materials**, in a way, the nylon or polyester **textile carcass** fabric plies are bonded with **synthetic rubber** compound, belting rubber **covers** are made of anti-abrasive, high tensile strength quality **M-24** or **N** grade suitable for carrying lumps or fine dust at ambient temperature, rubber grade **Heat Resistant**, SHR, Superior HR for hot materials transportation up to **200 degree C**, belt rubber grade **Hygienic** for sugar, tea, vegetables, food processing, belts cover quality **Fire Resistant** for use in transporting lignite coal, sulphur, nuclear power stations and supersedes IS:1891, BS: 490, DIN: 22102, ISO 4195 quality standards.

Materials Transportation hic Conveyor Belts

- **Nylon** conveyor belts **M - N** grade rubber **3- 8 ply, 3 x 1.5 mm** thick covers min. & above up to 2400 mm W
- Polyester textile **EP** Fabric Ply M- N grade conveyor belts up to 20mm thick
- **Hygienic Food** grade Nylon **3, 4 ply** conveyor belting up to 1200 mm W
- **Heat Resistant** conveyor belts with **4 x 2 mm** thick rubber covers min. & above of HR 120 C
- **Fire Resistant** conveyor belts with **3 x 3 mm** thick rubber covers min. & above
- **Rough Top** conveyor belts 3 ply with **3 mm ruff** min. thick on top up to 1000 mm W
- **Endless** size conveyor belts up to 90 mtrs max. single length
- **Elevator** rubber belts in 2 equal roll lengths
- **PVC Food** grade conveyor belts up to 2000 mm W
- **Rough Grip, Ribbed** PVC conveyor belts
- **Oil Resistant PVC** conveyor belts up to 3000 mm W
- **Conveyor Belt Fasteners**



Rubber Conveyor Belting

Contact For Quote:

HIC INTERNATIONAL CO -Conveyor Belts Materials Handling Products Div.

D-136, Shankar Road, New Delhi - 110060, India

Phone: 91-11-6547 2400, 2874 5120

Fax: 91-11-2874 2791

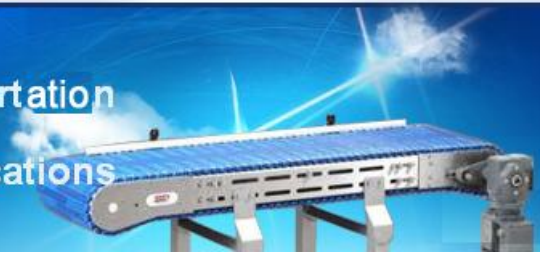
E-mail : universal@hic-india.com; belts@universaldelhi.org

Website : <http://www.rubber-steel-industrial-products.com>

Key personnel : Mr. Anil Gupta, President



Materials Transportation Conveyor Belts Technical Specifications



Conveyor Belt Technical Specifications COVER GRADES HIC Manufactured UNIVERSAL Brand

Rubber Belt Grade	Conforming To Standards	Applications			Belt Physical Properties		
		Belt Characteristic	Industrial Materials Handling Reference	Material Temperature Range	Av. Tensile Strength Belt (Min) Kg/Cm	Av. Elongation (Min.)%	Rubber Abrasion (Max.) mm
Belt Conveyor Mine, Belt Coal Conveyor, Rubber Belt, Limestone Quarry Conveyor					GENERAL PURPOSE		
M-24 ('M', 'A')	IS: 1891 (Part I) BS: 490(Part I)	High tensile strength and superior in abrasion, cut and gauge resistance. Recommended for transporting highly abrasive materials.	Metallic Ore, Coke stone, Copper Ore Limestone, Broken glass, etc.	(-)45°C to + 60°C	245	450	150
Fly Ash Conveyor Belt, Husk Conveyor Belt, Shot Blaster Belt				GENERAL PURPOSE			
N-17 (N or S)	IS: 1891 (Part I) BS: 490 (Part I)	Recommended for transporting moderately abrasive and non-abrasive materials.	Coal, Wood chips, Fine ores, Clay Unground, Cement etc.	(-)35°C to + 60°C	175	400	200
Synthetic Rubber Conveyor Belt, Urea Handling Belt				SPECIAL PURPOSE			
H-TEX	Mfd. to our Universal Standards	Moderate tensile strength and excellent in abrasion resistance exclusively manufactured by us.	Copper ore, Fertilizers, Sand, etc.	(-)45°C to + 80°C	190	400	100
Hot Belt, Clinker Handling Belt, Feeder Belting				HEAT RESISTANT			
Universal BLAZE (HR)	IS: 1891 (Part I) T1	Super in heat and abrasion resistant.	Cement, Chemicals, Soda ash, etc.	+ 65°C to + 120°C	130	350	250
Universal BETAPLUS (Super HR)	IS: 1891 (Part II) T2	Heat and abrasion resistant.	Cement clinker, Foundry Sand, Sintered ore, etc.	+ 65°C to + 150°C	130	350	250
Universal SUN (Superior HR)	Mfd. to our Universal Standards	Surface of rubber cover hardens by heat and shallow cracks occasionally. * Also, Ultra Heat Resistant up to 200C manufactured with minimum 7 x 3 mm cover thickness recommended	Iron pellet, Hot coke, Burnt limestone, etc.	+ 65°C to + 180°C	110	350	250
Conveyor Belting				OIL RESISTANT			
OR	IS: 1891 (Part III)	Excellent resistance to mineral, vegetable and animal oils.	Materials with crude petroleum Tar sand, Oil sand, etc.	(-)25°C to + 60°C	125	250	350

Contact For Quote:

HIC INTERNATIONAL CO -Conveyor Belts Materials Handling Products Div.

D-136, Shankar Road, New Delhi - 110060, India

Phone: 91-11-6547 2400, 2874 5120

Fax: 91-11-2874 2791

E-mail : universal@hic-india.com; belts@universaldelhi.org

Website : <http://www.rubber-steel-industrial-products.com>

Key personnel : Mr. Anil Gupta, President



Materials Transportation Conveyor Belts Technical Specifications



Food Quality Rubber Belt, CTC Tea Processing Machine Belt White Color					HYGIENIC		
HYGIENIC	IS: 1891 (Part IV)	Non-toxic, tasteless and odourless. Recommended for handling foodstuffs.	Tea, Coffee, Pharmaceuticals, etc.	(-)20°C to + 60°C	100	350	350
Industrial Conveyor, Power Station Rubber Belt, Coking Machinery Belt					FIRE RESISTANT		
FR	ISO 284	Fire resistance and anti static.	Coal, Coke, Sulphur, etc.	(-)45°C to + 60°C	110	400	200

(Remarks)* Testing method of abrasion as per DIN22101

#sub to (-20% tol.)

Special cover grades have also been developed depending upon service conditions, viz., Chemical Resistant & HTTR rubber grade.

** Weight of rubber cover (approx.) = 0.034 kg / 25 mm width / per 1 mm thick / per meter length.

*** Manufactured up to **2400 mm** widths

#**Weight** of nylon conveyor belt of **650 mm** wide x 315/3 x 3/1.5 mm covers of 100 mtr. long = **600 kgs**
approx. @ Conveyor carrying capacity of 800 mm wide belt is approx 140 tons/hour at belt speed of 45 mtr / min.

Also, manufacture of Oil Resistant PVC coated conveyor belts, confectionery use PU belting, sugar transportation white food grade PVC conveyor belting, PVC rough top belts.



Contact For Quote:

HIC INTERNATIONAL CO -Conveyor Belts Materials Handling Products Div.

D-136, Shankar Road, New Delhi - 110060, India

Phone: 91-11-6547 2400, 2874 5120

Fax: 91-11-2874 2791

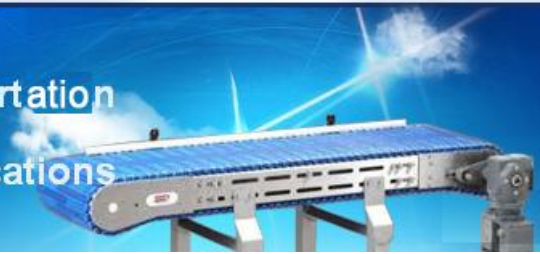
E-mail : universal@hic-india.com; belts@universaldelhi.org

Website : <http://www.rubber-steel-industrial-products.com>

Key personnel : Mr. Anil Gupta, President



Materials Transportation Conveyor Belts Technical Specifications



Conveyor Belt NYLON Fabric (NN) Product Specification

Belt Designation		Maximum Allowable Working Tension KN/M	Nominal Carcass Thickness (mm)	Nominal Carcass Weight (Kg/Cm) width/mtr.	Maximum Belt Width (mm) For Adequate Load Support (Material Bulk Density) (Kg./m)			Maximum Belt Width (mm) For Adequate Througling (Angle of picking idlers)		
Type	Rating				upto 800	upto 1500	upto 2500	20°	35°	45°
GENERAL DUTY (TYPE A)	200/2	20	1.9	0.019	650	500	400	300	300	450
	250/2	25	2.1	0.020	650	600	450	350	400	450
	250/3	28	2.9	0.021	700	650	500	350	400	450
	315/2	31	2.2	0.023	800	700	600	350	400	450
	315/3	31	3.0	0.028	1000	800	650	400	450	500
	400/3	40	3.2	0.033	1050	900	650	500	500	500
	400/4	44	3.9	0.038	1050	900	650	500	500	500
	500/3	50	3.2	0.033	1200	900	800	500	500	500
	630/3	63	3.4	0.035	1200	1000	800	500	500	500
HEAVY DUTY (TYPE B)	200/2	20	2.4	0.025	750	600	450	300	300	450
	250/2	25	2.6	0.030	900	650	500	450	450	500
	250/3	28	3.6	0.035	1000	900	650	450	450	500
	315/3	31	3.7	0.039	1200	1000	800	450	500	500
	400/3	40	3.9	0.042	1200	1000	800	500	500	600
	400/4	44	4.8	0.048	1300	1100	850	500	500	600
	500/3	50	4.0	0.045	1400	1200	900	500	500	600
	500/4	50	5.0	0.046	1400	1200	900	500	500	650
	630/3	63	4.2	0.047	1400	1200	1000	500	500	650
	630/4	70	5.4	0.052	1800	1400	1200	500	650	800
	800/4	90	5.6	0.054	1800	1600	1400	650	800	900
	800/5	100	6.7	0.058	1800	1600	1400	650	800	900
	1000/4	110	6.0	0.065	1800	1600	1400	650	800	900
	1000/5	120	7.0	0.070	1800	1600	1400	700	850	1000
	1250/4	140	6.4	0.070	1800	1600	1400	750	900	1000
1250/5	140	7.5	0.076	1800	1600	1400	800	1000	1000	

Contact For Quote:

HIC INTERNATIONAL CO -Conveyor Belts Materials Handling Products Div.

D-136, Shankar Road, New Delhi - 110060, India

Phone: 91-11-6547 2400, 2874 5120

Fax: 91-11-2874 2791

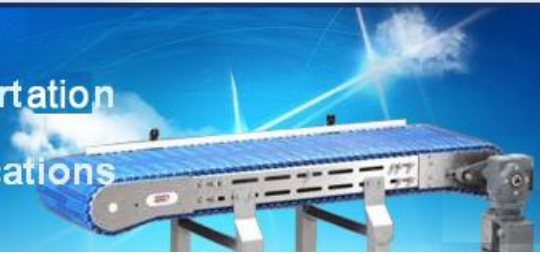
E-mail : universal@hic-india.com; belts@universaldelhi.org

Website : <http://www.rubber-steel-industrial-products.com>

Key personnel : Mr. Anil Gupta, President



Materials Transportation Conveyor Belts Technical Specifications



Conveyor Belt NYLON Fabric (NN) Product Specification

Belt Designation		Maximum Allowable Working Tension KN/M	Nominal Carcass Thickness (mm)	Nominal Carcass Weight (Kg/Cm) width/mtr.	Maximum Belt Width (mm) For Adequate Load Support (Material Bulk Density) (Kg./m)			Maximum Belt Width (mm) For Adequate Througling (Angle of picking idlers)		
Type	Rating				upto 800	upto 1500	upto 2500	20°	35°	45°
Extra HEAVY DUTY (TYPE C)	400/3	40	4.3	0.044	1200	1000	750	500	500	600
	500/3	50	4.4	0.048	1300	1100	750	500	500	600
	500/4	55	5.5	0.061	1400	1200	800	500	500	650
	630/3	63	4.6	0.052	1400	1200	850	500	500	650
	630/4	70	5.9	0.067	1400	1200	850	500	500	650
	800/4	90	6.2	0.070	1600	1400	1000	500	500	650
	800/5	100	7.3	0.081	1650	1400	1100	500	500	650
	1000/4	110	6.6	0.074	1800	1400	1200	500	65	800
	1000/5	120	7.7	0.085	1800	1500	1300	500	650	800
	1250/4	140	7.0	0.087	1800	1600	1400	650	650	800
	1250/5	140	8.3	0.092	1800	1800	1600	650	800	900
	1400/5	155	9.0	0.092	2000	1800	1800	650	800	900
	1600/5	180	9.4	0.097	2000	2000	1800	800	900	1000
1800/6	190	10.6	0.120	2000	2000	2000	800	900	1000	



Contact For Quote:

HIC INTERNATIONAL CO -Conveyor Belts Materials Handling Products Div.

D-136, Shankar Road, New Delhi - 110060, India

Phone: 91-11-6547 2400, 2874 5120

Fax: 91-11-2874 2791

E-mail : universal@hic-india.com; belts@universaldelhi.org

Website : <http://www.rubber-steel-industrial-products.com>

Key personnel : Mr. Anil Gupta, President



Materials Transportation Conveyor Belts Technical Specifications



Conveyor Belt COTTON Fabric (CC) Product Specification

Fabric Type	Approx. Thickness ply (mm)	Approx. Weight Kg/cm Width/mtr	Av. Breaking Strength of Individual fabric N/cm width		Maximum allowable working tension			
			Warp	Waft	N/cm/ply			
					Mechanical Fasteners		Vulcanised Splices	
					Screw	Gravity	Screw	Gravity
				Take-up	Take-up	Take-up	Take-up	
280Z	1.20	0.012	625	335	44.1	47.1	47.1	52.9
320Z	1.25	0.014	690	370	52.9	55.9	55.9	60.8
360Z	1.40	0.016	720	380	55.9	64.7	64.7	69.6
420Z	1.85	0.019	865	455	69.6	75.5	75.5	80.4
480Z	2.00	0.020	1040	430	87.3	96.1	96.1	104.9
34oz	1.30	0.017	670	480	52.9	55.9	55.9	60.8

Conveyor Belt POLYESTER (EP) Canvas Fabric Product Specification

Belt Designation		Minimum Breaking Load of Belt Full Thickness		Thickness of Carcass (approx. mm)
		Longitudinal direction (KN/m. width)	Transverse direction (KN/m width)	
EP200/2	2EP100	200	80	2.1
EP250/2	2EP125	250	100	2.3
EP315/2	2EP160	315	125	2.4
EP315/3	3EP100			3.2
EP400/2	2EP200	400	160	2.5
EP400/3	3EP125			3.4
EP400/4	4EP100			4.1
EP500/2	2EP250	500	200	2.8
EP500/3	3EP160			3.4
EP500/4	4EP125			4.2
EP630/3	3EP200	630	250	3.6
EP630/4	4EP160			4.5
EP800/3	3EP250	800	320	4.2
EP800/4	4EP200			4.7
EP800/5	5EP160			5.6

* NN, all - nylon belts are regularly produced & widely used, conforming ISO: 9001 standards.

EP belts manufacturing undertaken for min. 2,000 mtr quantity order in each width & specs. Such belts are suggested for 2 Kms. long & above single belt system run due to nil stretch characteristics but are poor in heat resistance than nylon belts.



Contact For Quote:

HIC INTERNATIONAL CO -Conveyor Belts Materials Handling Products Div.

D-136, Shankar Road, New Delhi - 110060, India

Phone: 91-11-6547 2400, 2874 5120

Fax: 91-11-2874 2791

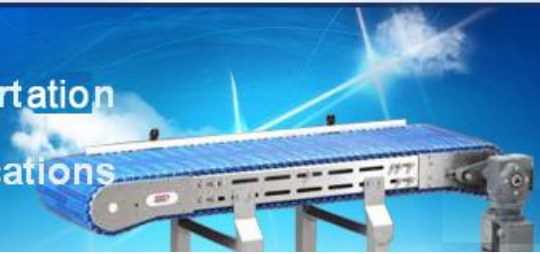
E-mail : universal@hic-india.com; belts@universaldelhi.org

Website : <http://www.rubber-steel-industrial-products.com>

Key personnel : Mr. Anil Gupta, President



Materials Transportation Conveyor Belts Technical Specifications



Conveyor Belt ENDLESSING (SPLICING)

Conveyor Belting can be rendered endless by jointing the two ends of a length of belt either by vulcanized splicing or by using mechanical fasteners. The former is recommended for better results. Hot Vulcanizing method of belts are followed by HIC for best durability.

Splicing: V-shaped (often called diamond) type of joints are strongly recommended. The extra length required to make the belt endless to requisite size shall be calculated by the following formula:

Splice Length = $W + 150 (N-2) + 25\text{mm}$ where,

W is width of belt (in mm), N is the number of plies.

For splicing procedure, please refer our separate detailed manual and for your splicing tool requirements viz., vulcanizing machine, tools & instruments, solution & cover compound, kindly call us.

CALCULATION OF BELT ROLL DIAMETERS

Where D = Roll Diameter (m)
d = Belt Thickness (m)
L = Belt Length (m)
K = Diameter of Core (m)

$$D = \frac{4d \cdot L}{\pi} + K^2 \text{ (m)}$$



Contact For Quote:

HIC INTERNATIONAL CO -Conveyor Belts Materials Handling Products Div.

D-136, Shankar Road, New Delhi - 110060, India

Phone: 91-11-6547 2400, 2874 5120

Fax: 91-11-2874 2791

E-mail : universal@hic-india.com; belts@universaldelhi.org

Website : <http://www.rubber-steel-industrial-products.com>

Key personnel : Mr. Anil Gupta, President



Materials Transportation Conveyor Belts Technical Specifications



Conveyor Belt Recommended Minimum PULLEY DIAMETER

Belt Carcass Thickness (mm)				Recommended Minimum Pulley Diameter (mm)								
Canvas Fabric Belt Type				Percentage of maximum allowable working tension used								
All Cotton		All Nylon		Up to 30%			Over 30 up to 60%			Over 60 up to 100%		
From	To	From	To	Type of Pulley			Type of Pulley			Type of Pulley		
				A	B	C	A	B	C	A	B	C
2.0	3.1	2.3	2.7	160	160	125	200	160	125	250	200	160
3.2	3.9	2.8	3.5	200	200	160	250	200	160	315	250	200
4.0	5.0	3.6	4.4	250	250	200	315	250	200	400	315	200
5.1	6.2	4.5	5.5	315	315	250	400	315	250	500	400	315
6.3	7.8	5.6	7.0	400	400	315	500	400	315	630	500	400
7.9	10.0	7.1	8.8	500	500	400	630	500	400	800	630	500
10.1	12.5	8.9	11.1	630	630	500	800	630	500	1000	800	630
12.6	15.6	11.2	13.8	800	800	630	1000	800	630	1250	1000	800
15.7	17.5	13.9	15.5	1000	1000	800	1250	1000	800	1400	1250	1000
17.6	20.0	15.6	17.7	1000	1000	800	1250	1000	800	1600	1250	1000

Conveyor Belt Information To Be Supplied With Enquiry or Order

1. Belt width (mm)
2. Number of plies
3. Type of Fabric
4. Duty type
5. Thickness of Rubber Cover on Top (mm)
6. Thickness of Rubber Cover on Bottom (mm)
7. Grade of Rubber Cover
8. Length of Belt Required (meters.)
9. Ends of the Belt (open or endless)

A: Conveyor Driving Pulleys; **B:** Conveyor Snub Pulleys; **C:** Conveyor Bend Pulleys

Disclaimer: Information's, written and verbal are provided by HIC, relative to its products which it determines to be reliable & no liabilities of whatsoever nature in regards to its uses. The purchaser of UNIVERSAL brand industrial products should determine for itself the suitability of such products.



Contact For Quote:

HIC INTERNATIONAL CO -Conveyor Belts Materials Handling Products Div.

D-136, Shankar Road, New Delhi - 110060, India

Phone: 91-11-6547 2400, 2874 5120

Fax: 91-11-2874 2791

E-mail : universal@hic-india.com; belts@universaldelhi.org

Website : <http://www.rubber-steel-industrial-products.com>

Key personnel : Mr. Anil Gupta, President