



## Belt Conveyor Machinery Pulleys Technical Specifications



### Conveyor Pulley Technical Specification INDUSTRIAL MACHINERY HIC Manufactured

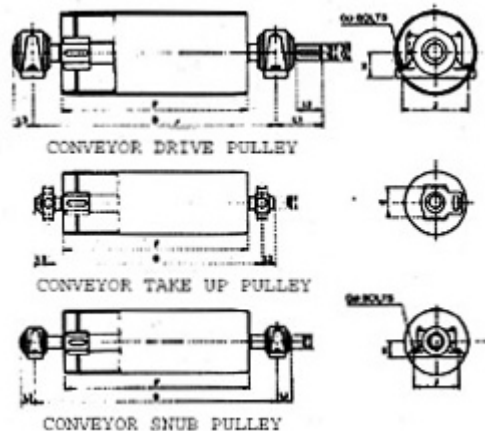
Universal Conveyor Pulleys ensures continuous operation with increased bearing life and reduced power consumption, in a way, the shell is made from heavy tubes or fabricated from steel plates, pulley shafts of carbon steel machined with proper bore and keyway (taper lock bushings are also offered being optional), shafts fitted with anti-friction self-aligning ball bearings, pulley drum furnished with high quality rubber lagging grooved properly to resist slippage and conforms to IS:8531.



Conveyor Pulley

### Conveyor Pulley MATERIAL HANDLING EQUIPMENT Product Specification

- Conveyor Belt Drive Pulley upto 2400 mm BW
- Belt Conveyor System Snub Pulleys
- Conveyor Machine Take up Pulley
- Industrial Pulleys, Others, as per specific requirements.



#### Contact For Quote:

HIC INTERNATIONAL CO -Cast Iron Products Belt Pulley Div.

D-136, Shankar Road, New Delhi - 110060, India

**Phone:** 91-11-6547 2400, 2874 5120

**Fax:** 91-11-2874 2791

**E-mail :** universal@hic-india.com; belts@universaldelhi.org

**Website :** <http://www.rubber-steel-industrial-products.com>

**Key personnel :** Mr. Anil Gupta, President



## Belt Conveyor Machinery Pulleys Technical Specifications



BELT WIDTH		400	450	500	600	650	750	800	900	1000	1200	1400	1600	1800	2000	
F		500	550	600	700	750	850	950	1050	1150	1400	1600	1800	2000	2200	
B	40 $\pm$	50 $\pm$	700	750	800	900	950	1050	1150	1250	1350	-	-	-	-	
	65 $\pm$		750	800	850	950	1000	1100	1200	1300	1400	1650	1850	-	-	
	80 $\pm$	100 $\pm$	800	850	900	1000	1050	1150	1250	1350	1450	1700	1900	2100	2300	2500
	125 $\pm$	140 $\pm$	850	900	950	1050	1100	1200	1300	1400	1500	1750	1950	2150	2350	2550

do $\pm$	d2o $\pm$	L1	L2	L3	J	H	G	E
40 $\pm$	38 $\pm$	125	58	50	170	60	M12	102
50 $\pm$	48 $\pm$	150	82	55	210	70	M16	102
65 $\pm$	60 $\pm$	175	105	65	230	80	M16	151
80 $\pm$	75 $\pm$	200	105	80	290	100	M20	165
100 $\pm$	95 $\pm$	235	130	95	350	125	M24	260
125 $\pm$	120 $\pm$	275	150	110	420	150	M30	-
140 $\pm$	130 $\pm$	300	175	125	470	170	M30	-

### Conveyor Pulleys Information To Be Supplied With Enquiry or Order

1. Pulley Drum Size i.e. 850mm or 1050mm & so on.
2. Drive Shaft or bearing size.
3. Overall shaft length.
4. Plain shaft extension.
5. Face length.
6. Drive shaft extension.
7. Keyway length, depth & width.
8. Finished drum dia.
9. Rubber lagging thickness in mm
10. Finished diameter over rubber lagging.
11. Quantity in Nos.

Disclaimer: Information's, written and verbal are provided by HIC, relative to its products which it determines to be reliable & no liabilities of whatsoever nature in regards to its uses. The purchaser of UNIVERSAL brand industrial products should determine for itself the suitability of such products.



#### Contact For Quote:

HIC INTERNATIONAL CO -Cast Iron Products Belt Pulley Div.

D-136, Shankar Road, New Delhi - 110060, India

**Phone:** 91-11-6547 2400, 2874 5120

**Fax:** 91-11-2874 2791

**E-mail :** universal@hic-india.com; belts@universaldelhi.org

**Website :** <http://www.rubber-steel-industrial-products.com>

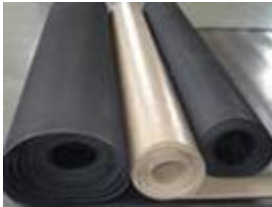
**Key personnel :** Mr. Anil Gupta, President



## Floor Insulation & Gasket Rubber Sheets Technical Specifications



### Rubber Sheet, Antistatic Mat, Cork Sheet Cork Sheet Technical Specification HIC Manufactured UNIVERSAL Brand



Rubber Sheets Rolls



NBR-EPDM Rubber Sheeting

Universal Rubber Sheets are used for jointing between flanges and/or similar joints subjected to pressures of water/air/low pressure steam up to 3.5 kg/cm<sup>2</sup> in steel mills, fertilizer industries, chemical & pharmaceutical plants, food, etc and HIC International Co, India offers solid black color vulcanized sheet possessing excellent physical properties, resistant to air, water, steam & compression set.

- Anti-skid Electric Mat Rubber 33KV current resistant 1m x 2m size up to 25mm Thickness
- Cork Sheet 2ft x 3ft size upto 25 mm Thick
- Skirt-Board Rubber 200mm W x 25 mtr Long size 8 to 20mm Thick
- Rubber Lagging 1m x 2m, 1.2m x 2.4m, 1.4m x 10m size 6.5 to 25mm Thick
- Neoprene 1m x 2m, 1.2m x 2.4m, 1.4m x 10m size upto 50mm Thick
- Nitrile 1m x 2m, 1.2m x 2.4m, 1.4m x 10m size upto 50mm Thick
- Shot Blast 1m x 2m ,1.2m x 2.4m size 4 to 20mm Thick
- EPDM 1m x 2m, 1.2m x 2.4m, 1.4m x 10m size upto 25 mm Thick
- Silicone 1m x 2m, 1.2m x 2.4m, 1.4m x 10m size upto 25 mm Thick
- Viton 1.2m x 2.4m, 1.4m x 10m size 3 to 25 mm Thick
- Hypalon 1.2m x 2.4m, 1.4m x 10m size upto 25 mm Thick
- SBR 1m x 2m, 1.2m x 2.4m, 1.4m x 10m size till 25 mm Thk
- Natural 1m x 2m, 1.2m x 2.4m, 1.4m x 10m size upto 25 mm Thick
- Insertion White Sheet 1m x 2m size 3 to 25 mm Thick
- Floor Mat 1.2m x 10m size 3 to 6 mm Thick
- Horse Mat 4ft x 6ft size 15 to 25mm Thick

#### Contact For Quote:

HIC INTERNATIONAL CO -Rubber Compound Sheets Products Div

D-136, Shankar Road, New Delhi - 110060, India

**Phone:** 91-11-6547 2400, 2874 5120

**Fax:** 91-11-2874 2791

**E-mail :** universal@hic-india.com; belts@universaldelhi.org

**Website :** <http://www.rubber-steel-industrial-products.com>

**Key personnel :** Mr. Anil Gupta, President



## Floor Insulation & Gasket Rubber Sheets Technical Specifications



### Rubber Sheet SYNTHETIC Product Specification

* Rubber Sheet Grade	Thickness Range (mm)	# Dimension Size W x L (mm)	Finish of Rubber Sheet	Approx Weight (kgs) Per Sheet (Per 1mm Thick)	Rubber Sheeting Characteristics
* Categorie	Gamme d ép (en mm)	# Dimension ( W x L)	Finition de plaque	Poidx approx par plaque ép 1mm	Caracteristique
* Grado	limites de densidad (mm)	# Tamano dimension ( W x L)	Perfeccion de Hoja	Peso Approximadamente (kgs) de cada hoja	Caracteristicas
* Grau	Espessure Limites	Dimensao Tamanho	Acabamento de Chapa	Peso Aprox (kg) par chapa (1mm espessure)	Caracteristicas
* Grad	Dicke (mm)	# Massen (W x L) mm	Zunchtung des Bleches	Gewicht (kg) pro Bleche (1mm Dicke)	Merkmale
* Grado	Spessore gamme	# Dimensioni (W x L)	Finitura	Peso Appr (kg) del nastro (spess 1mm)	Caracttenstiche
Rubber Compounded Sheet Natural Rubber " General Purpose " L usage general " Uso general " Uso Genal " allgemeiner Zweck " per L Impiego Generale					
1. (a) <b>Natural Rubber Sheet (NR)</b> 1. (b) NR ( <b>blended</b> ) Corrugated/chequered/plain	1.5 to 3.0 6.0 to 25.0	<b>1000 x 2000 do = 1 m x 2 m</b>	Moulding - do-	4 ± 10% -do-	Resistant to temp. (hot air) - 250C to + 600c, hot water upto 500C steam upto 700C, moderate resistance to acetic acids, alkalies, vegetable oils, gases like oxygen, nitrogen & sulphurdioxide and sea water.
Rubber Sheet Shot Blasting " General Purpose " L usage general " Uso general " Uso Genal " allgemeiner Zweck " per L Impiego Generale					
1. (c) <b>NR High Pressure</b>	1.5 to 25.0	<b>1000 x 2000</b>	Moulding	3.5 ± 10%	



#### Contact For Quote:

HIC INTERNATIONAL CO -Rubber Compound Sheets Products Div

D-136, Shankar Road, New Delhi - 110060, India

**Phone:** 91-11-6547 2400, 2874 5120

**Fax:** 91-11-2874 2791

**E-mail :** universal@hic-india.com; belts@universaldelhi.org

**Website :** <http://www.rubber-steel-industrial-products.com>

**Key personnel :** Mr. Anil Gupta, President



## Floor Insulation & Gasket Rubber Sheets Technical Specifications



Rubber Sheet Heat Resistant & Steam Proof " General Purpose " L usage general " Uso general " Uso Genal " allgemeiner Zweck " per L Impiego Generale					
<b>2. Synthetic Rubber Sheet</b> SBR (100%styrene butadiene)	1.5 to 25.0	<b>1000 x 2000</b>	Moulded	3.3 ± 10%	Resistant to temp. (hot air) -250C to + 700c, hot water upto 900C steam upto 1200C, moderate resistance to acetic acids, alkalies, vegetable oils, gases like oxygen, nitrogen & sulphurdioxide and sea water.
Rubber Sheet Acid & Solvent Resistant " Resisant au solvant et a L acide " Resistencia a Solvente Y a acido " Resistente ao acido e ao dissolvente " saure-und losungsmittelfes " Resistente allacido e solvente					
<b>3. Nitrile Rubber Sheet</b> (a) NBR (65% Nitrile) (b) NBR (65% Nitrile) (c) NBR (100% Nitrile)	0.5 to 6.0 1.5 to 50.0 1.5 to 50.0	<b>1000 x upto 5000 long 1000 x 2000 -do-</b>	Calendered Moulded Moulded	1.6m2 ± 15% 3.2 ± 10% 3.1 ± 10%	Resistant to temp. (hot air) -300C to + 900c, hot water upto 1000C, steam upto 1100C, moderate resistance to fatty acids, chlorine gas and good resistance to acetic acids, alkalies, hydrochloric acid, vegetable & mineral oils, gases like oxygen, nitrogen and sea water.
* Rubber Sheet Grade	Thickness Range (mm)	# Dimension Size W x L (mm)	Finish of Rubber Sheet	Approx weight (kgs) Per Sheet (Per 1mm Thick)	Rubber Sheet Characteristics
Rubber Sheet Flame and Solvent Resistant " Resistant au solvant et a la flame " Resistente a Sovente Y a fuego " Resistente a chama e ao dissolvente " flame-und losungsmittelfest " Resistente alla flamma e solvente					
<b>4. Neoprene Rubber Sheet</b> (a)CR (65% Neoprene) (b) CR (65% Neoprene) (c) 100% Neoprene	0.5 to 6.0 1.5 to 50.0 1.5 to 50.0	<b>1000 x upto 5000 long 1000 x 2000 -do-</b>	Calendered Moulded Moulded	1.6m2 ± 15% 3.2 ± 10% 3.1 ± 10%	Resistant to temp. (hot air) -300C to + 1000c, hot water upto 1000C steam upto 1250C, moderate resistance to fatty acids, hydrochloric acid, mineral oils, gases like chlorine, ozone & sulphur dioxide and good resistance to alkalies, vegetable oils, gases like oxygen & nitrogen, open flame and sea water. Also resistant to food where non -toxic grades are required.
Rubber Sheet Steam & Heat Resistant " Resistant au vapeur et a la chaleur " Resistente a vapor Y a calor " damp -und warmefest " Resistente at vapore e ca e calore					
<b>5. EPDM Rubber Sheet</b> Ethylene - propylene (100% EPDM)	1.5 to 25.0	<b>1000 x 2000</b>	Moulded	3.1 ± 10%	Resistant to temp. (hot air) -100C to + 1700c, hot water upto 1000C steam upto 1600C, moderate resistance to acetic acids and good resistance to fatty acids, sulphuric acid, hydrochloric acid, nitric acid, alkalies, vegetable oils, almost all gases and sea water.

### Contact For Quote:

HIC INTERNATIONAL CO -Rubber Compound Sheets Products Div

D-136, Shankar Road, New Delhi - 110060, India

**Phone:** 91-11-6547 2400, 2874 5120

**Fax:** 91-11-2874 2791

**E-mail :** universal@hic-india.com; belts@universaldelhi.org

**Website :** <http://www.rubber-steel-industrial-products.com>

**Key personnel :** Mr. Anil Gupta, President



## Floor Insulation & Gasket Rubber Sheets Technical Specifications



Rubber Sheet Super Heat Resistant " Resistant a la chaleur extra ordinaire " Resistente a calour mucho " Resisente ao super color " super warmefest " Resistente al surriscaldamento "

<b>6. Silicon Rubber Sheet</b> MQ (100% Silicon)	1.5 to 12.5	<b>1000 x 2000</b>	Moulded	3.1 ± 10%	Unique resistant to temp (hot air) upto 4590C sunlight, water, ozone, food & other gases and good resistance to acids.
---	-------------	--------------------	---------	-----------	--

### Cork Sheet Oil Resistant & Thermal Insulator

<b>7. Cork Sheet Rubberised</b> a) 100% Nitrile Blended b) Nitrile Rubber Blended Cork Sheet	3 to 25.0 3 to 25.0	<b>600 x 900 do = 2 ft x 3 ft</b>	Moulded -do-	0.6 ± 10% 0.8 ± 10%	Excellent oil resistant & good resistance to gas or other liquid upto 1100C temperature having good compression proper ties without lateral spread, retaining 80% of original thickness. Conforms IS:4253 applied suitably in transformers, switch gears, automobiles, etc.
---	---------------------	-----------------------------------	--------------	------------------------	---

### Floor Insulation Safety Mat Antistatic Rubber

<b>8. Electric Rubber Mat</b> (Antistatic Chequered, Anti-skid)	6.5 to 50.0	<b>1000 x 2000</b>	Moulded	2.7 ± 10%	Resistant to voltage upto 33,000 V electric current & good water absorption. Conforms IS:5424 and BS:921, applied suitably in power house, thermal power plants electricity boards, etc for electrical shock prevention.
---	-------------	--------------------	---------	-----------	--

### Joining General Purpose Insertion Sheet

<b>9. Insertion Rubber Sheet</b> (white or coloured)	1.5 to 25.00	<b>1000 x 2000 1200 x 5000</b>	Calendered in long lengths	3.8 ± 10%	Good resistance to steam & water. Conforms IS:638
--	--------------	--------------------------------	----------------------------	-----------	---

**Hardness (IRHD) :** Type A:50 to 65, Type B:66 to 80 ; Tolerance in **Size** : +1% ; Tolerance in **Thickness** : + 2.5% ; Tolerance in Hardness : +5. \* Manufacture of rubber sheeting in other grades are also undertaken on enquiry or order than stated above. \* Manufacture of Neoprene **Rubber Cords**, Silicon Rubber Cords also undertaken.

## Rubber Sheeting Information To Be Supplied With Enquiry or Order

1. Thickness is mm (sub. To tol. +2.5%)
2. Size i.e. w x l (sub. To tol. + 1%)
3. Rubber Grade
4. Finish i.e. plain or chequered
5. Hardness Shore A (sub. To tol. + 5)
6. Colour
7. Quantity in Nos.



### Contact For Quote:

HIC INTERNATIONAL CO -Rubber Compound Sheets Products Div

D-136, Shankar Road, New Delhi - 110060, India

**Phone:** 91-11-6547 2400, 2874 5120

**Fax:** 91-11-2874 2791

**E-mail :** universal@hic-india.com; belts@universaldelhi.org

**Website :** <http://www.rubber-steel-industrial-products.com>

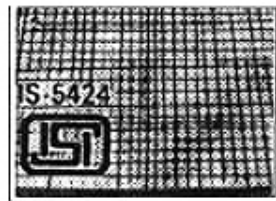
**Key personnel :** Mr. Anil Gupta, President



## Floor Insulation & Gasket Rubber Sheets Technical Specifications



Rubber Compound Testing



Floor Insulation Mat  
Rubber Sheets packed in rolls

Disclaimer: Information's, written and verbal are provided by HIC, relative to its products which it determines to be reliable & no liabilities of whatsoever nature in regards to its uses. The purchaser of UNIVERSAL brand industrial products should determine for itself the suitability of such products.

### Contact For Quote:

HIC INTERNATIONAL CO -Rubber Compound Sheets Products Div

D-136, Shankar Road, New Delhi - 110060, India

**Phone:** 91-11-6547 2400, 2874 5120

**Fax:** 91-11-2874 2791

**E-mail :** universal@hic-india.com; belts@universaldelhi.org

**Website :** <http://www.rubber-steel-industrial-products.com>

**Key personnel :** Mr. Anil Gupta, President



## Conveyors Troughing Idlers Rollers Technical Specifications



### Conveyor Idler Product Specification HIC Manufactured UNIVERSAL Brand

Universal Idlers ensures **achievement of operational success of belt conveyors**, in a way, the shell is made form Mild Steel ERW black steel tube superseding IS: 9295 & IS: 1239, pressed steel **housing** from CRCA sheet, **shaft** of bright steel bar, **sealing system** consisting of (back-seal, double labrynth, moulded dust cover, a rain cap), single piece fabricated steel idler **frame** and rollers fitted with seize resistant **ball bearings** and supersedes IS: 8598.



Conveyors Troughing Idlers

#### Material Handling Conveyor Idler Rollers

- Troughing Idler (3/5 rolls) for carrying
- Flat Impact Belt Conveyor Idler
- Return Idler (1 roll) for return
- Self-Aligning Return Idler
- Troughing Impact Idler (rubber lined)
- Idler Roller Others, as per specific requirements

### Material Handling Equipment Conveyor Belt Roller Technical Specification

BELT WIDTH		ROLLER LENGTH		MOUNTING DIMENSIONS		HEIGHTDIMENSION"H" ROLLERDIA "D"								
W	L	L3	L1	L2	M-d	76.1	88.98	101.6	114.3	127	139.7	152.4	159	165
400	160	500	690	755	M12	200	200	200	225	225	-	-	-	-
450	190	550	740	805	M12	200	200	200	225	225	-	-	-	-
500	200	600	790	855	M12	200	200	200	225	225	-	-	-	-
600	235	700	890	950	M12	-	-	-	225	225	-	-	-	-
650	250	750	940	1000	M12	-	-	-	225	225	275	-	-	-
750	290	850	1040	1100	M12	-	-	-	225	225	275	-	-	-
800	315	950	1090	1150	M12	-	-	-	225	225	275	275	275	-
900	350	1050	1190	1250	M12	-	-	-	225	225	275	275	275	-
1000	380	1150	1290	1350	M12	-	-	-	225	225	275	275	275	-
1200	465	1400	1490	1560	M16	-	-	-	240	240	275	275	275	290
1400	530	1600	1690	1750	M16	-	-	-	240	240	275	275	275	290
1600	600	1800	1900	1950	M16	-	-	-	240	240	275	275	275	290
1800	670	2000	2100	2150	M20	-	-	-	240	240	275	275	275	290
2000	750	2200	2300	2350	M20	-	-	-	240	240	275	275	275	290



#### Contact For Quote:

HIC INTERNATIONAL CO -Cast Iron Products Idlers Roller Div.

D-136, Shankar Road, New Delhi - 110060, India

**Phone:** 91-11-6547 2400, 2874 5120

**Fax:** 91-11-2874 2791

**E-mail :** universal@hic-india.com; belts@universaldelhi.org

**Website :** <http://www.rubber-steel-industrial-products.com>

**Key personnel :** Mr. Anil Gupta, President



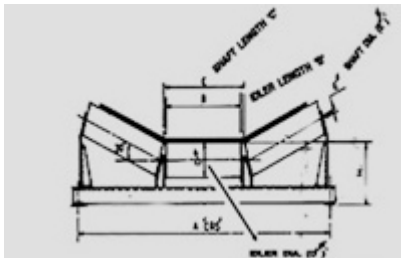
## Conveyors Troughing Idlers Rollers Technical Specifications



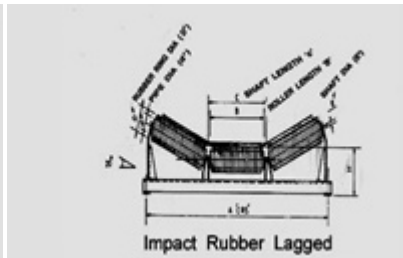
### Conveyor Roller Information To Be Supplied With Enquiry or Order

1. For belt width, say 800mm or 1000mm & so on.
2. Degree of picking idlers i.e. 200 or 350 & so on.
3. Angle size to be used i.e. 50x50x6 or 65x65x6 & so on if at all specifically to be stated.
4. Idler pipe size (OD) in mm.
5. Overall O.D. in case rubber lined idlers are reqd. for Impact Idlers.
6. Housing material i.e. CRCA steel or C.I. & so on.
7. Bearing size, type & make i.e. 6205 or 420205 & so on.
8. Idler Roller Quantity in Nos.
9. Your detailed drawing. If possible.

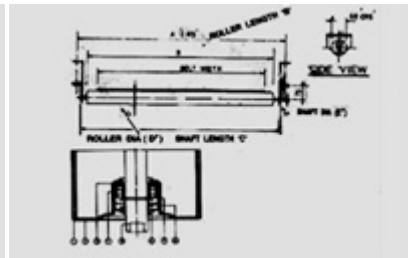
P.no.	DESCRIPTION	QTN	MATERIAL
1	ROLLER PIPE	1	MS-erw
2	BEARING HOUSING	2	CRCA
3	REAR SEAL	1	NYLON-6
4	BEARING	1	STANDARD
5	SHAFT	1	BRIGHT BAR
6	RUBBER SEAL	2	NEOPRENE
7	CIRCLIP	1	HEAVY DUTY
8	SEALS	1	NYLON-6



Carrying Troughing Idlers



Impact Rubber Lagged Rollers



Return Self Align Idlers

Disclaimer: Information's, written and verbal are provided by HIC, relative to its products which it determines to be reliable & no liabilities of whatsoever nature in regards to its uses. The purchaser of UNIVERSAL brand industrial products should determine for itself the suitability of such products.



#### Contact For Quote:

HIC INTERNATIONAL CO -Cast Iron Products Idlers Roller Div.

D-136, Shankar Road, New Delhi - 110060, India

**Phone:** 91-11-6547 2400, 2874 5120

**Fax:** 91-11-2874 2791

**E-mail :** universal@hic-india.com; belts@universaldelhi.org

**Website :** <http://www.rubber-steel-industrial-products.com>

**Key personnel :** Mr. Anil Gupta, President